



Parks 2025 Capital Improvement Program

Niki Geisler, Parks Director
Tony Wotzka, Greenways Manager
Parks Department
Physical Development Division

1

Overview

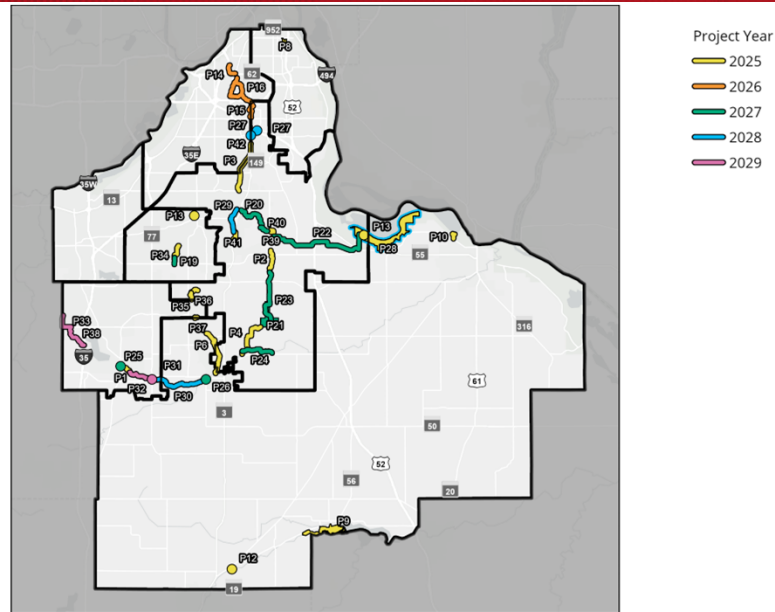


- CIP Map for 2025-2029
- Acquisition
- Greenway Development
- Park Development
- Natural Resources
- Questions/Comments

2

CIP Map – 2025-2029

Dakota
COUNTY



3

Acquisitions

Dakota
COUNTY

Lebanon Hills Greenway

- Jansen (fee title)

River to River Greenway

- City of West Paul Outlot (fee title)
- Minea Trust property (fee title)

Rosemount Greenway

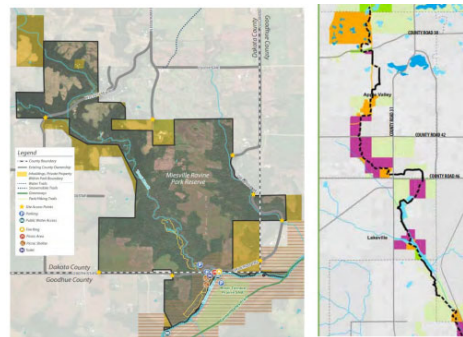
- LandSpect4 property (corridor easement)

Veterans Memorial Greenway

- Baker, Medin, and Snyder properties (easements)

Lake Byllesby Regional Park

- Ferguson property (easement)



5

Greenways



- Greenway Enhancements (Set-aside)
- Greenway Collaborative (set-aside)
- Greenway Wayfinding (set-aside)
- Lake Marion Greenway – Lakeville
- Lebanon Hills Greenway – Lebanon Hills Park to Highway 149
- Mississippi River Greenway – Hastings Bluff and Overlook

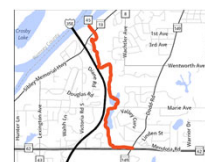
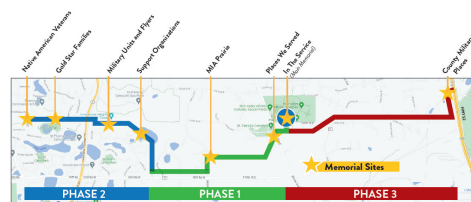


7

Greenways continued



- North Creek Greenway, Vermillion River Greenway and South Creek
- Vermillion Highlands Greenway – Rosemount
- Vermillion Highlands Greenway – Farmington to Whitetail Woods
- Veterans Memorial Greenway (Carry Over)
- Minnesota River Greenway (Carry Over)
- River to River Greenway – Valley Park (Carry Over)



8

Park Development



- Parks Enhancement (Set-Aside)
- Lebanon Hills & Lake Byllesby Regional Parks Campground Buildings and Beach House Replacement/Renovation
- Lebanon Hills Sustainable Trails Improvement Phase I
- Cannon River Preservation & Waterford Bridge Restoration
- Lebanon Hills Regional Park and Spring Lake Park Reserve Retreat Centers
- Lake Byllesby Regional Park Master Plan improvements
- Lake Byllesby Regional Park Turbine Exhibit



9

Park Development Continued



- Thompson County Park Master Plan Improvements
- Spring Lake Park Reserve - Fischer Avenue Trailhead and River Access (Carry Over)
- Miesville Ravine Park Reserve - Improvements - Phase 1 (Carry Over)



10

Natural Resources



- Begin plant propagation in the new greenhouse at Lebanon Hills Regional Park.
- We will be purchasing a new 123.5 acre Park Conservation Area in Waterford Township.
- Restoration will begin in Church's Woods at the eastern end of Spring Lake Park Reserve.
- The Natural Resource Management System Plan will be updated, starting in 2025



Sam & Lynsey – Plants from current hoop house



Small White Lady's Slipper



Church's Woods in Spring Lake Park Reserve

11



Questions?

12